

Demand Prediction and Management Tool Step-by-step Training Guide

Water Sector
CAFC S.p.A (CAF) - Italy



Content Overview



SUNRISE

This step-by-step guide helps users navigate the Demand Prediction and Management Tool to analyse forecast data and manage uploads. It forms part of the training materials provided for the solution, alongside the [training video](#) for the CAFC S.p.A (Italy) pilot in the Water Sector.

01

Login & Interface

04

Demand
Prediction Page

02

Dashboard Page

05

File Upload Page

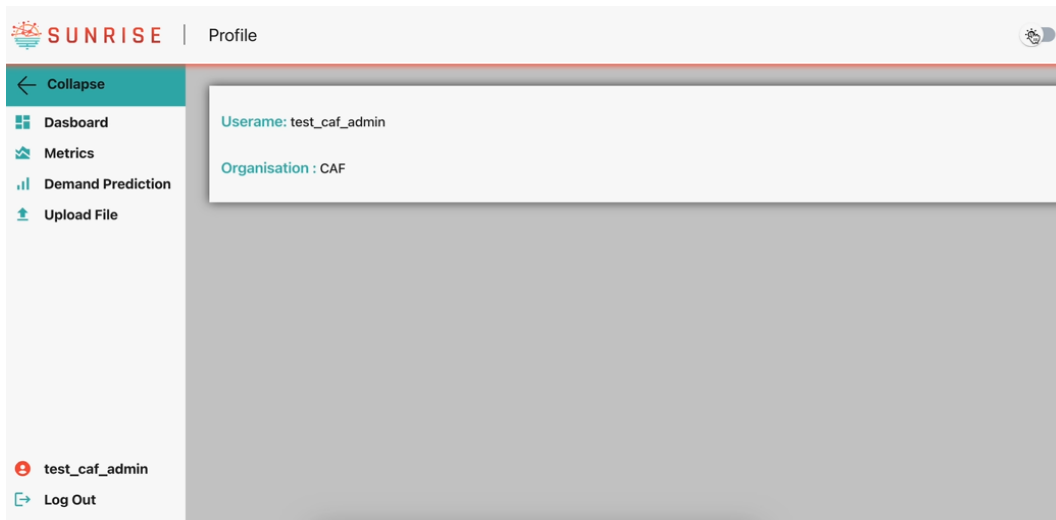
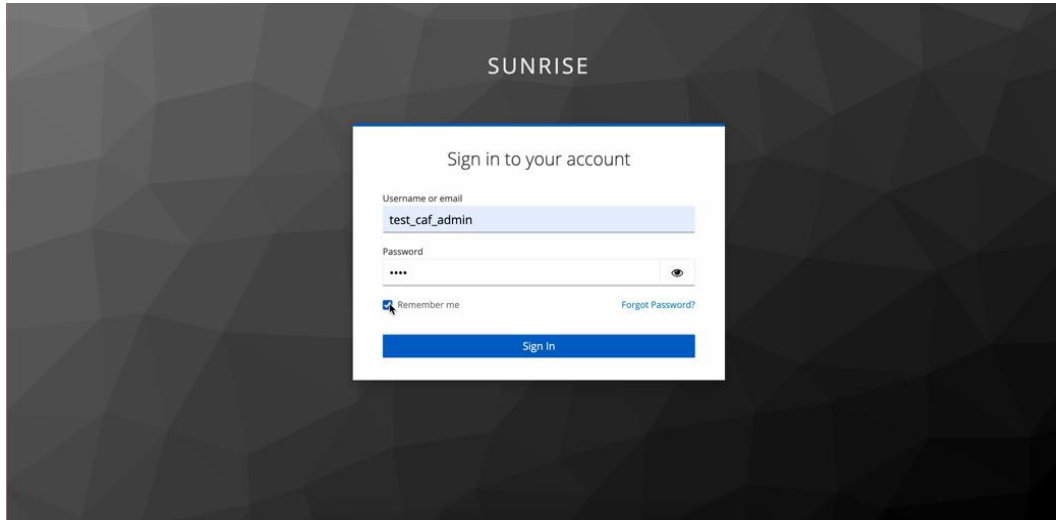
03

Metrics Page

06

Logout

Login & Interface

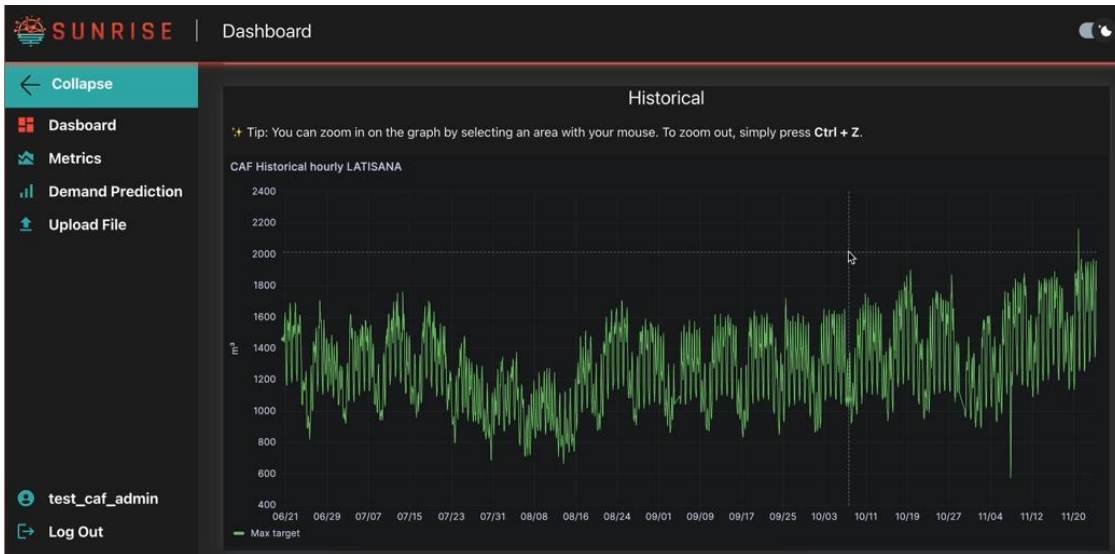


- + Begin by entering your credentials on the login screen.
- + Select the “**Remember Me**” option if you wish to stay signed in on future visits.
- + After logging in, the main dashboard loads, featuring a left-hand sidebar with navigation links and a toggle to switch between **dark and light themes**.

Dashboard Page

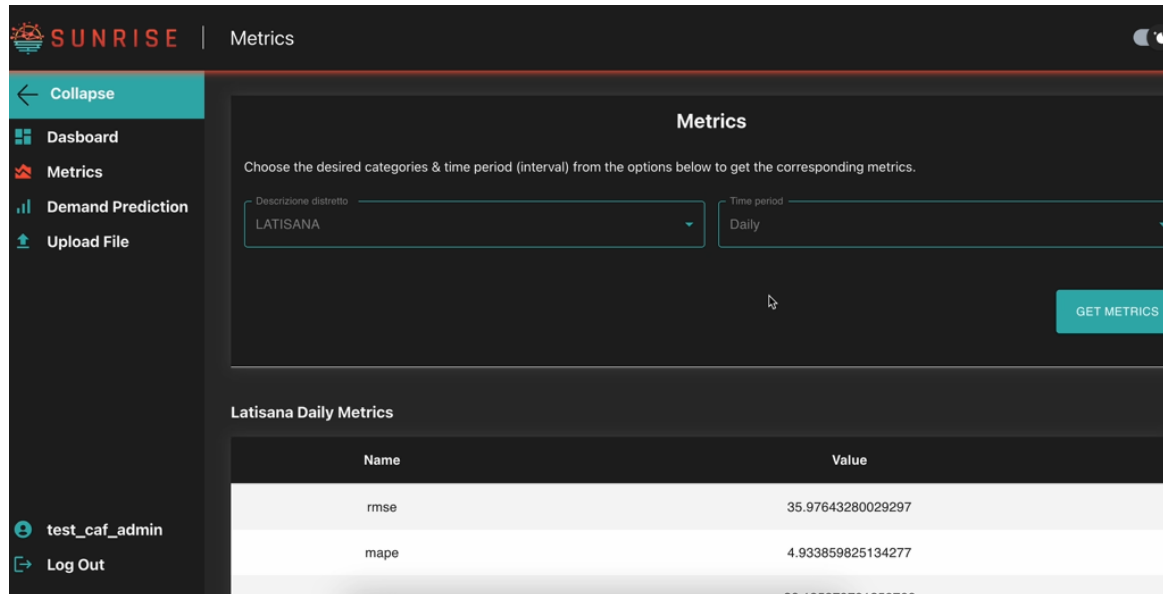


SUNRISE



- + Use the dropdown menus to **filter data by district**.
- + Explore **interactive time series graphs** of uploaded water-related data.
- + You can zoom into specific time ranges and **use Ctrl + Z to reset the view** to its default zoom level.

Metrics Page



The screenshot shows the SUNRISE Metrics page. The left sidebar contains navigation links: Collapse, Dashboard, Metrics, Demand Prediction, and Upload File. The main content area is titled 'Metrics' and includes instructions to choose categories and time period. Two dropdown menus are present: 'Descrizione distretto' (set to LATISANA) and 'Time period' (set to Daily). A 'GET METRICS' button is located to the right. Below the filters, a table titled 'Latisana Daily Metrics' displays performance metrics.

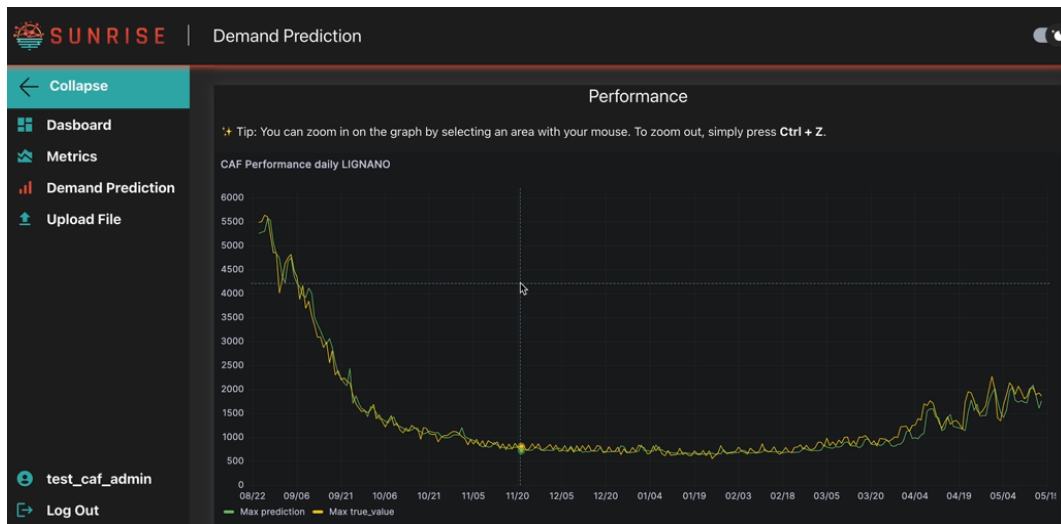
Name	Value
rmse	35.97643280029297
mape	4.933859825134277
mae	06.135970701250766

- + Navigate to the Metrics section to **evaluate model performance**.
- + Apply filters to select the district and time period.
- + Performance metrics such as:
 - › **RMSE** (Root Mean Squared Error)
 - › **MAPE** (Mean Absolute Percentage Error)are displayed in a structured table for easy comparison.

Demand Prediction Page



SUNRISE

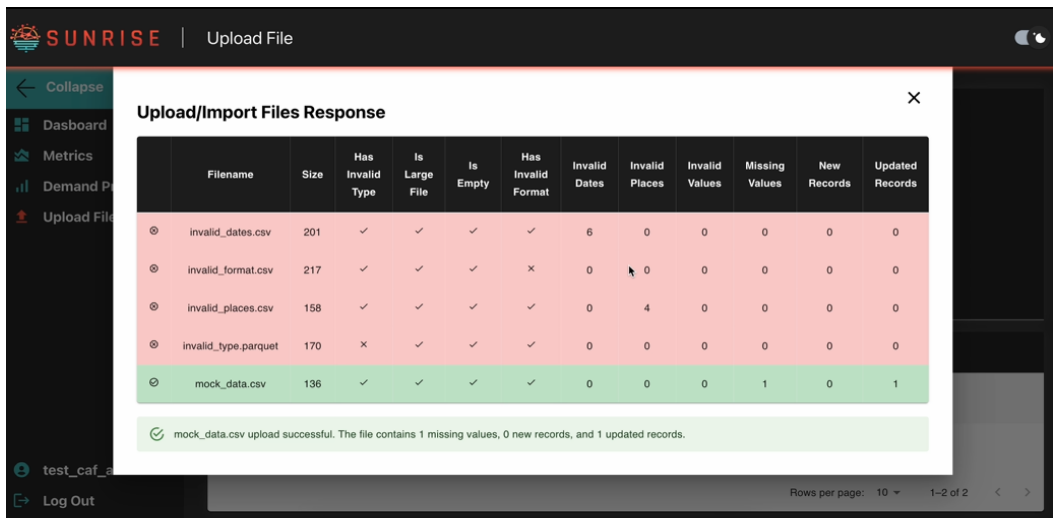
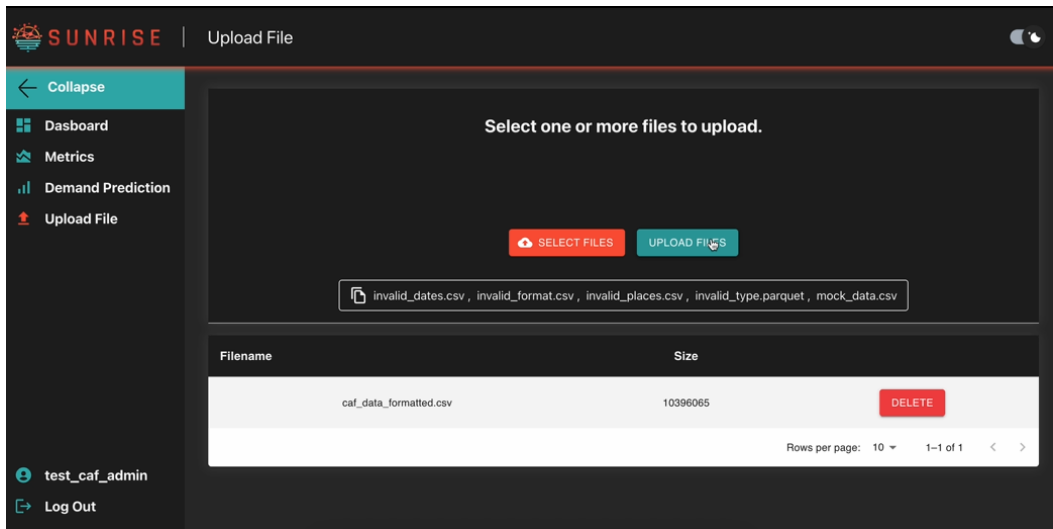


- + Go to the Demand Prediction page and select your **place and forecast time interval** to view upcoming demand projections.
- + Two graphs are provided:
 1. A **forecast graph** showing future demand.
 2. A **comparison graph** displaying predicted values versus actual data during training.
- + You can zoom in and use **Ctrl + Z** to reset the **view** to its default zoom level.

File Upload Page

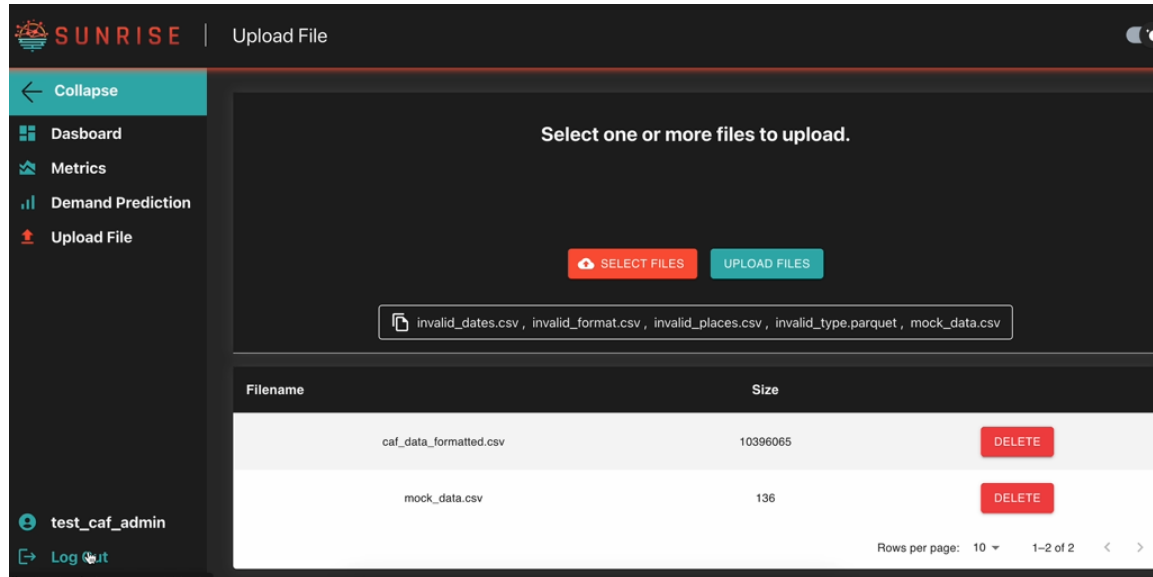


SUNRISE



- + Upload **one or multiple data files** through the file upload interface.
- + The system automatically performs **validation checks** for: type, size, and missing values.
- + Invalid files will be flagged in **red** with an explanation of the issue.
- + Valid files appear in **green** and will immediately initiate model training upon upload.
- + After upload, dashboard and metrics update automatically. You can delete uploaded files and data.

Logout



- + When finished, simply click to **log out** and end your session securely.



SUNRISE

Thank you for following the training.

For more information:
<https://sunrise-europe.eu/>



This project has received funding from the European Union's Horizon Europe research and innovation programme under Grant Agreement No. 101073821

The material presented and views expressed here are the responsibility of the author(s) only.
The EU Commission takes no responsibility for any use made of the information set out.